



Wedgle® Direct-Inject™ TREE INJECTION SYSTEM

ArborSystems
The No-Drill Injection Solution

Delivers proven results with less chemicals compared to foliage spray or soil drenching

- No guarding
- No return trips
- No mixing, spilling or spraying
- No waiting for uptake
- No drilling
- No drilling damage

Nutriboosters® MicroNutrients

Improve tree health with Nutriboosters helping trees overcome chlorosis and promote leaf growth.

GreenTree Pro Nutriboosters 0-15-10

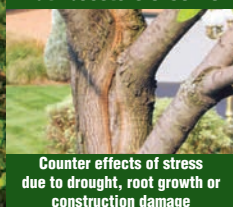


Trees suffering from slow or incomplete leaf-out?

GreenTree Pro Nutriboosters® helps stressed, weak, and yellowing trees regain health and vitality. One application will help trees quickly green up, leaf out, and recover from drought, construction or transplant stress. Results are often seen within two weeks, especially when treatments are made in the late spring or early summer. It is a unique formulation of three compounds which boost tree vigor.

- Phosphorus encourages stem elongation, root growth, and vegetative growth.
- Potassium promotes overall tree health.
- Iron promotes the development of darker green, healthy leaves, relieving the symptoms of chlorosis.

PK Pro Nutriboosters 0-36-26



Counter effects of stress due to drought, root growth or construction damage

Boost your tree recovery program

PK Pro® Nutriboosters is used to counter the effects of stress due to drought, transplanting or construction damage.

- Phosphorus encourages stem elongation and is essential for root growth, vegetative growth, and fruit set.
- Potassium promotes overall tree health.

Trees looking yellow or tired?

Indications of iron chlorosis and manganese deficiency:

- Iron deficiency in conifers is indicated when the needles turn yellow.
- In deciduous trees, the leaves yellow while the veins remain green. When fine veins become chlorotic (yellow), and/or if leaf edges are wavy, crinkled, or curled, tree may also have manganese deficiency.
- The degree of yellowing indicates the severity of the deficiency.
- Ornamental trees sensitive to iron deficiencies include American Elm, Cottonwood, Jack Pine, London Plane, Magnolia, Maples, Mountain Ash, Oaks, Walnut, White Pine, and Yellow Birch.
- Ornamental trees susceptible to manganese deficiencies include Birch, Dogwood, Maples (especially Red and Sugar) Flowering Cherry, Sweetgum, and Sergeant Crab.

Iron Nutriboosters relieves symptoms of iron chlorosis, the general yellowing of foliage. And it helps leaves turn green which improves tree health.

Manganese Nutriboosters relieves symptoms of manganese deficiency in trees.

Iron/Manganese Nutriboosters relieve symptoms of iron chlorosis and manganese deficiencies in trees.

Iron / Manganese Nutriboosters



Contact your distributor for details. • 800.698.4641 • ArborSystems.com

Nutriboosters® MicroNutrients

| Nutribooster | Contains: | Application Rate: | Timing: |
|------------------------------------|--|--|-----------------------------------|
| Iron Nutribooster | 12.5% Iron | Inject 1-2 ml every 4" around base of tree | Spring / Late Summer |
| Manganese Nutribooster | 5% Manganese | Inject 1-2 ml every 4" around base of tree | Spring / Late Summer |
| Iron/Manganese Nutribooster | 8.5% Iron 3.5% Manganese | Inject 1-2 ml every 4" around base of tree | Spring / Late Summer |
| GreenTree Pro Nutribooster 0-15-10 | 15% Phosphorus 10% Potassium 8% Iron | Inject 1-2 ml every 4" around base of tree | Spring / Late Summer |
| PK Pro Nutribooster 0-36-26 | 36% Phosphorus 26% Potassium | Inject 1-2 ml every 4" around base of tree | Anytime during the growing season |



AS-MicroNutrients 082012



Treat almost any tree in 5 minutes or less!

Wedgle® Direct-Inject™ TREE INJECTION SYSTEM



Increase treatment effectiveness

The Direct-Inject process injects chemicals directly into the active zone delivering faster results.

Treat almost any tree in five minutes or less

There is no waiting for uptake, no guarding, and no return trips. More trees treated in less time.

Prevent drilling damage

Direct-Inject is the only trunk injection method that does not require drilling, preventing drilling damage, long-term wounding, and wasted tree energy.

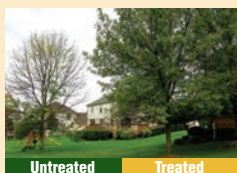
Simplify the tree-care process

The Direct-Inject System requires no power, no drills, and no pumps. Everything is included in one carrying case.

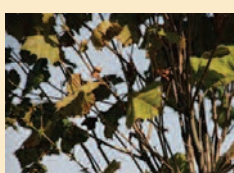
Insecticides • Fungicides • PGRs • MicroNutrients



- Control webworm, caterpillars, mites and nematodes (prevents Pine Wilt disease) using Greyhound™ Insecticide



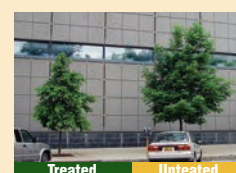
- Treat for Emerald Ash Borer, Hemlock Woolly Adelgids, Whiteflies and Royal Palm Bugs using Pointer® Insecticide



- Prevents Anthracnose in Sycamore, Diplodia Tip Blight, Dutch Elm disease, Crabapple Leaf disease and Oak Wilt disease using Shepherd® Fungicide



- Effective control of Pythium diseases, Sudden Oak Death, Beech Decline and Fireblight using Whippet® Fungicide



- Reduces tree growth up to 70% over three years including stem elongation and wood formation using Mastiff® PGR



800.698.4641
www.ArborSystems.com
ArborSystems • P.O. Box 34645 • Omaha, NE 68134